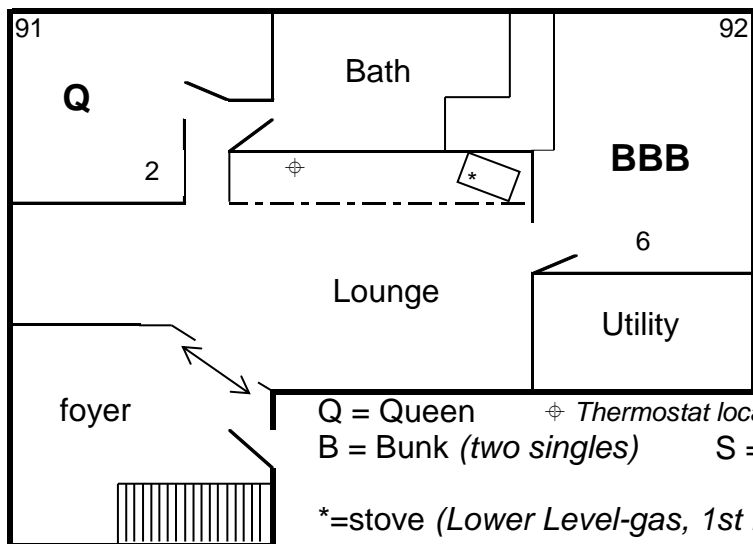
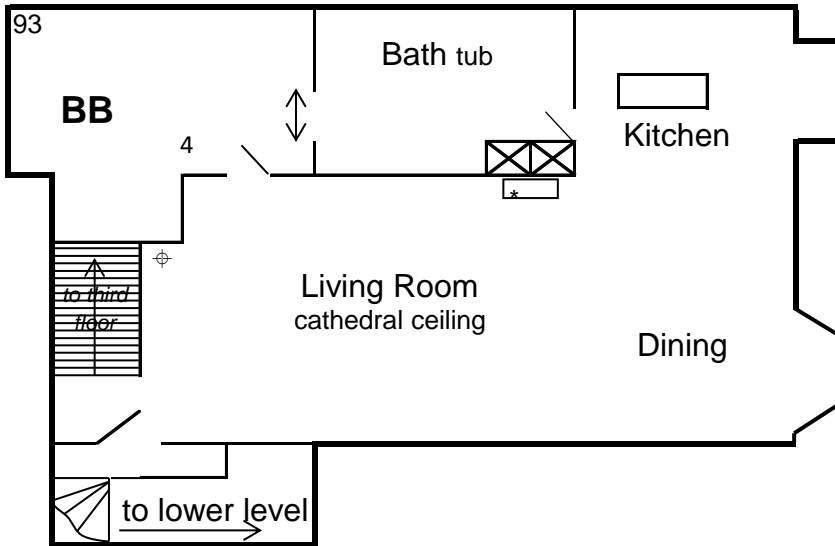
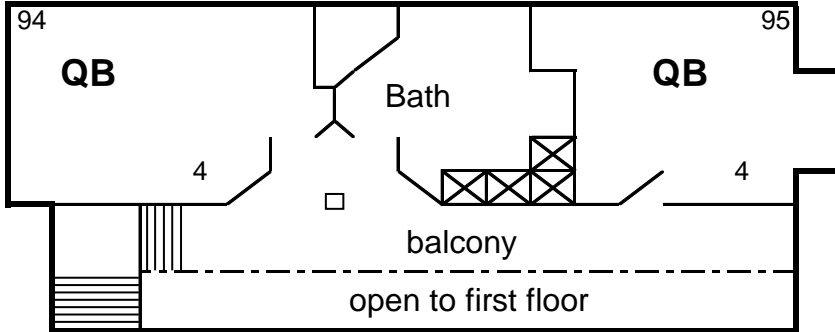


Aspen Layout

5 bedrooms; 17 beds; 20 maximum



Q = Queen ⊕ Thermostat location 17 beds, accommodates 20
 B = Bunk (two singles) S = Single
 * = stove (Lower Level-gas, 1st Floor-wood)



Aspen Kitchen Inventory

*You can expect to find this kitchen equipped to serve approximately 20 people with the items listed below.

*Please wash and return items to their designated place after using them.

*Report any damaged or missing items to the office.

APPLIANCES

refrigerator
kitchen range with oven
microwave
dishwasher
toaster
(2) 12-cup coffee makers & filters

SILVERWARE

knives
spoons
forks
serving spoons

DINNERWARE

dinner plates
soup/salad bowls
dessert plates
cups
mugs

BAKEWARE

9" x 13" baking pans
cookie sheets
pizza pans
casserole dishes (2 quart)
roasting pan

COOKWARE

stock pot with lid
2 assorted sauce pans with lids
2 assorted frying pans

PREPARATION & SERVING EQUIPMENT

| | |
|-------------------|------------------------|
| ladles | box grater |
| large spoons | colander |
| wire whisks | liquid measuring cups |
| pancake turners | dry measuring cups |
| tongs | measuring spoons |
| meat fork | mixing bowls |
| rubber scrapers | assorted serving bowls |
| potato masher | pitchers |
| meat thermometer | BBQ tongs |
| ice cream scoop | BBQ fork |
| vegetable peelers | BBQ spatula |
| pizza cutter | BBQ brush |
| assorted knives | |

MISC. EQUIPMENT

| | |
|--|----------------------|
| tea kettle | ice cube trays |
| cutting boards | sponges & Brillo pad |
| can opener | dish soap |
| salt & pepper shakers | dishwasher detergent |
| pot holders, dish cloths & dish towels | |

ITEMS NOT PROVIDED

salt, pepper, cooking spices or oils
food, beverages, coffee or tea
paper towels or napkins
toiletries
ice
disposable plates, cups, or silverware
aluminum foil, plastic wrap, etc.

**Please use the cans provided
in this kitchen for your
garbage and recyclables.
THANK YOU!**